

WOVEN WIRE MESH +
CRIMPED WIRE SCREEN +
ARCHITECTURAL MESH +
PERFORATED METAL SHEETS +
EXPANDED METAL MESH +
WEDGE WIRE SCREEN PANEL +



WOVEN MESH AND SCREEN PANELS FOR ARCHITECTURAL INDUSTRY



Architectural Mesh for Outdoor & Interior Design

Introduction

Architectural mesh is ideal product for outdoor and interior design, due to its versatility, stability and exclusive optical properties. The woven mesh and screen panels can be found from facade, fence, dividing panels, creative design products, ceilings, wall covering, floor grates and stair treads. Decorative mesh is available in many different weave sizes and finishes to fit any style. The wire mesh panel works great as a divider, it is allowing air movement and light to pass through.

The unique qualities of screen panels bring safety, cleanliness, durability, and aesthetics to any building. The decorative mesh surface are ideally suited for all inside and outside conditions, such as dust, grease, snow, mud, ice, detergent, etc. Openings are small enough to catch most falling items. The products are easy to install, they also have a high load capacity and long life.

Applications

- Shopping malls
- Hotel & restaurants
- Exhibition grounds
- Office buildings
- Public gardens
- Airports, roads & highways
- Factories & workshops

Advantages

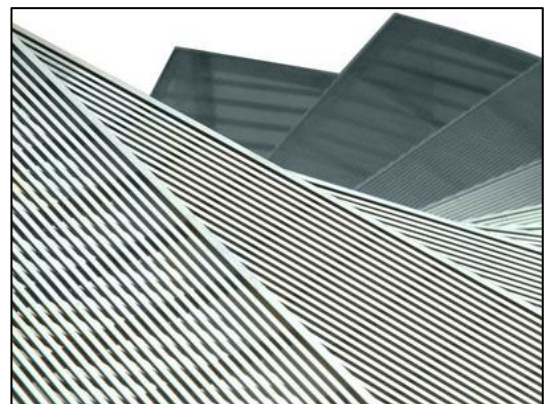
- Good air permeability and light-admitting quality.
- High strength and strong toughness
- Fire protection and high temperature resistance
- Beautiful appearance
- Good resistance to corrosion



Cable & rod mesh facade



Perforated metal sunshade screens



Wedge wire screen stair treads

Technical Parameters

When ordering, please specify:

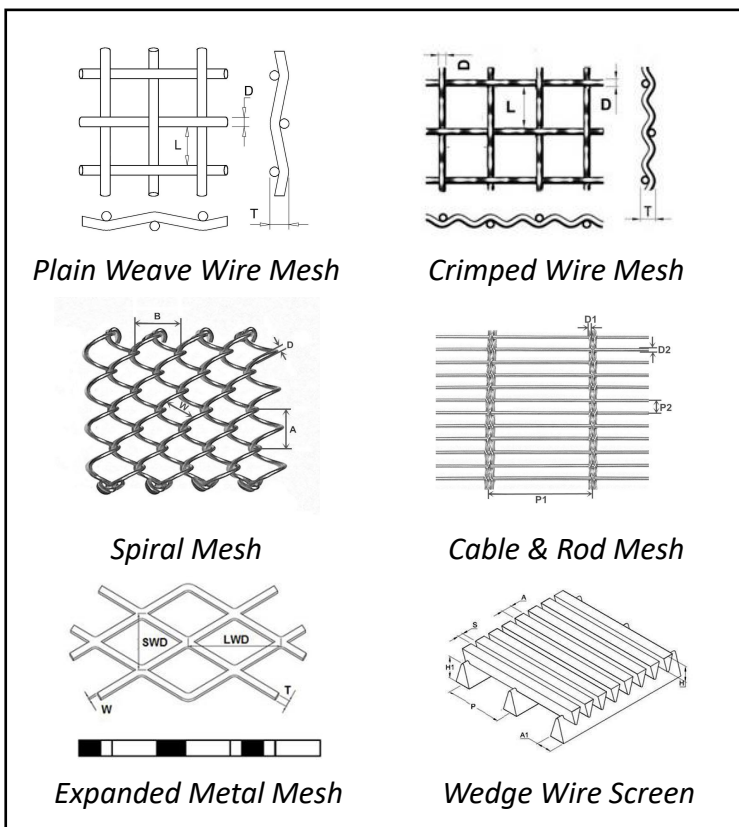
The followings are necessary important information for a complete specification of the screen panels:

1. Type

Stainless steel wire mesh
Brass wire mesh
Copper wire mesh
Crimped wire screen
Flat wire mesh
Cable and rod mesh
Metallic cloth curtain
Spiral drapery mesh
X-Tend cable mesh
Expanded metal mesh
Perforated metal sheets
Wedge wire screen panel

2. Material

Carbon/plain steel
Stainless steel 304, 316L, 321
Brass, pure copper, phosphor bronze
Pure nickel, nickel alloy, monel
Aluminum 1050, 5052, 5056



Hebei Ourun Wire Mesh Co.,Ltd.

The East Industrial Park
Hebei, China
Tel: +86 0311 80890395
Mobile: +86-138 3118 6385
Email: Linda@orangewiremesh.com
Website: www.orangewiremesh.com